



Community Policing

Past, Present and Future

Thomas Stolz
Deputy Chief of Police

Norman D. Williams
Chief of Police

October 16, 2007



Community Policing Defined

“Community policing is an organization-wide philosophy and management approach that promotes community, government and police *partnerships*; *proactive problem – solving*; and community engagement to address the *causes of crime, fear of crime* and other community issues.”

Robert Trojanowicz, Ph.D.



Wichita Police Department Mission and Core Values

Our Mission...

The Wichita Police Department's Mission is to provide professional and ethical public safety services in *partnership* with citizens to identify, *prevent*, and solve the *problems of crime, fear of crime*, social disorder and neighborhood decay, thereby improving the quality of life in our community.

Our Core Values...

- Ethical Behavior
- Protecting the Community
- Diversity
- *Problem Solving*



City Council Goal

Providing a safe and secure community.

Indicators:

- Maintain and/or improve response times and the crime rate
- Improve environmental health and community safety
- Maintain and improve citizens' perception of public safety



Objectives

- ❑ **Historical overview of Community Policing in Wichita**
- ❑ **Statistical information**
- ❑ **Community Policing future**
- ❑ **National and International recognition**

Wichita Community Policing Historical Overview

- Decision to develop neighborhood initiative based on emerging national crime trend, and:
 - Failing delivery of public safety services
 - In 1993:
 - 53 homicides
 - Gang and drug wars
 - Community perception of lack of safety
 - More than 29,000 major crimes reported
 - Disconnect between citizens and City Hall
 - Few neighborhood associations in existence

Wichita Neighborhood Initiative: Strategies for Building Safe, Secure Neighborhoods

- **1993 Neighborhood Initiative was developed through the collaborative efforts of citizens, business owners, media, community organizations and the City of Wichita**
- **The City adopted a plan to integrate the Neighborhood Initiative and expected all City departments to:**
 - **Participate in the community policing concept**
 - **Develop inter-departmental cooperation**
 - **Enhance citizen connectivity to City government by developing more neighborhood associations in partnership with the emerging Wichita Independent Neighborhoods**

Wichita Neighborhood Initiative: Strategies for Building Safe, Secure Neighborhoods

- **City Council placed a sales tax funding issue on the local ballot for the 1993 November elections with commitment to hire 100 additional police officers to:**
 - **Improve police services**
 - **Implement community policing if approved**
- **Tax increase voted down, but City officials follow through with \$1 million to hire some additional officers**

1994

- **Community policing created out of the Neighborhood Initiative with CP training curriculum developed and added to the 720 hour training course for new officers**
- **15 police officers and 2 lieutenants selected, trained and assigned to the four original CP target areas:**
 - ✓ **Near Northeast**
 - ✓ **Midtown Riverside**
 - ✓ **Planeview**
 - ✓ **South Central**

1994 Continued

- **Resource Tracking System (RTS) was created to provide each department a way to document requests for service**
- **A Resource Manual was created by the City Manager's Office and referenced hundreds of service providers. This manual provided officers with a single source of information when they received requests for services**
- **The Clean Team concept was developed and implemented. Development of inter-departmental cooperative approach to address problem properties**
- **The Clean Team Coordinator in OCI coordinated the beginning of the Neighborhood Cleanup Program**

1995

- **A new mayor was elected**
- **The Mayor's Select Committee was created to evaluate the Wichita Police Department's operations**
- **William Watson was appointed Chief of the Wichita Police Department**

1995 Continued

- **The Committee recognized that community policing should be integrated on a citywide level**
- **Committee suggested the four substations become fully operational; patrol facilities to serve as the center of the four new patrol bureaus**
- **The police department began the process hiring approximately 125 police officers as the result of the federal Community Oriented Police Services Grant**

1996-1998

- **Community policing was expanded citywide and the Field Services Division was divided into four bureaus**
- **Each of the Police Department's 36 beats had a Community Policing Officer assigned to work with the other six-beat officers and citizens**
- **The department was restructured to support the change in operational philosophy**

1996-1998 Continued

- **Neighborhood Assistants were established and placed in the Neighborhood City Halls**
- **Neighborhood Inspectors and Environmental Services personnel were assigned to Neighborhood City Halls**
- **School Resource Officers placed in six Wichita high schools**
- **Police Department was honored with the Webber Seavey Award for the South Central Prostitution Project**

2000 – 2004

- **April 2000, Norman Williams was appointed Chief of Police**
- **Developed new Department mission statement and core values that reflect Community Policing philosophy**
- **The Community Policing philosophy was enhanced through the beat team concept where each officer assigned to a patrol beat is held accountable for beat's crime trends, traffic complaints and quality-of-life issues**
- **Expanded SRO program by placing officers in nine local Middle Schools**

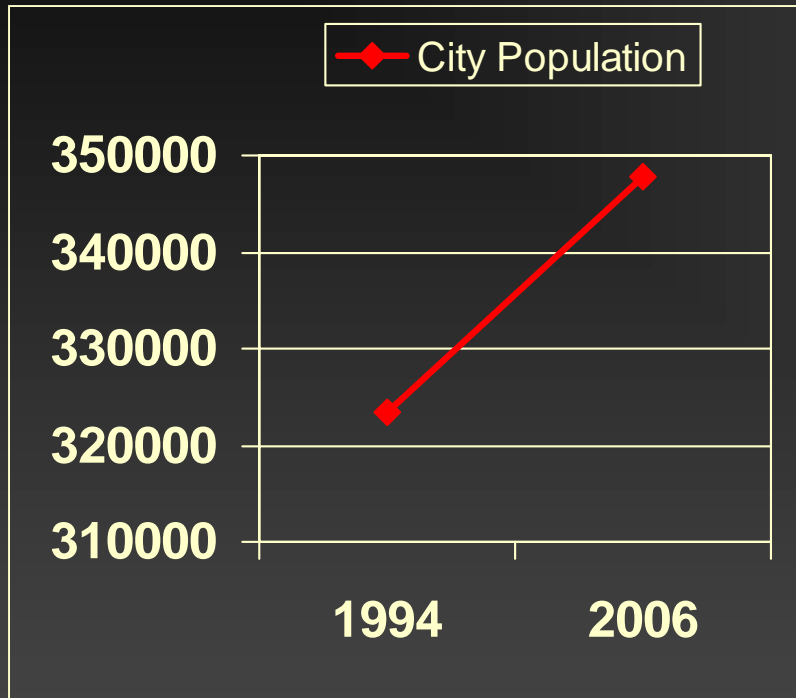
2000 – 2004 Continued

- **Police Department was awarded a Webber Seavey Finalist Award for Integrating Community Policing into the Investigations Division**
- **The police department implemented neighborhood-based traffic operations. Traffic personnel and equipment were assigned to the four patrol stations**
- **In 2003, the International Association of Chiefs of Police and Motorola awarded the Wichita Police Department a second Webber Seavey Award for the Planeview Activity Camp for Kids (Parks Dept., area businesses, other partners)**
- **Funding for officers who had been hired under federal Community Oriented Policing Services grants were absorbed into the General Fund Budget**

2006 – 2007

- **City Council goal: Provide for a safe and secure community**
- **Developed performance indicators**
- **Transforming Wichita**
- **Quality of life surveys completed for “Beat 44” and Hilltop**
- **StopBlight Program**
 - **StopBlight Action Response Team**

Important Statistical Trends



Wichita Population

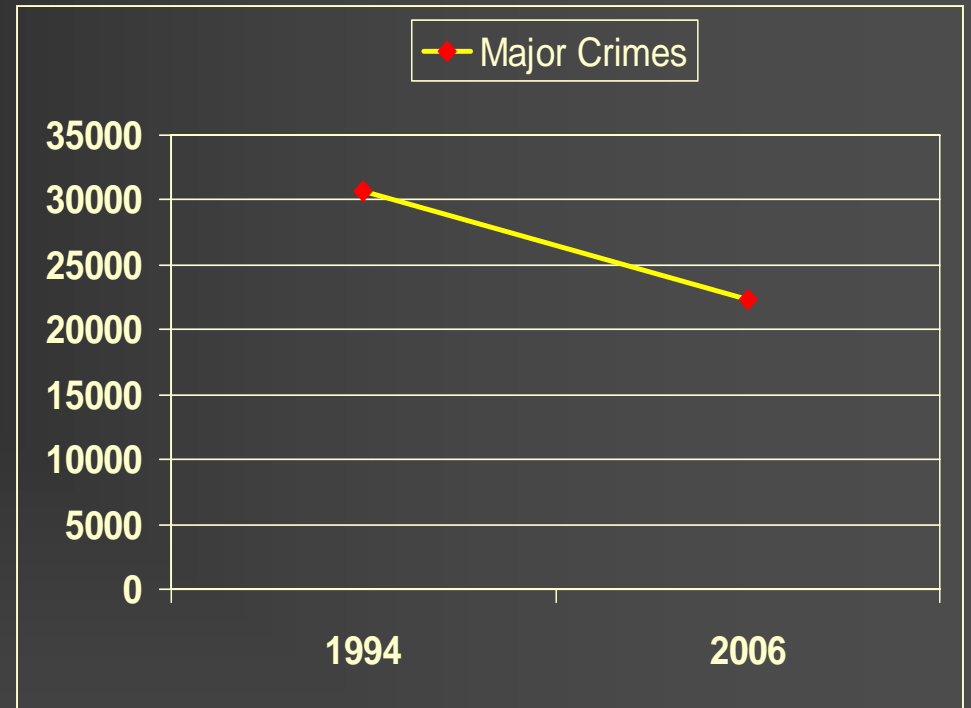
1994

2006

323,342

347,698

+7.5%



Major Crimes

1994

2006

30,644

22,260

-27.4%

Community Policing Future

- **Additional department personnel necessary to sustain proactive policing approach**
- **Building new patrol stations and expanding others**
- **Neighborhood base Investigations Detectives**
- **Enhance teamwork among WPD and all City Departments**
 - **Community oriented services**

Community Policing Future Continued

- **Encourage consistent neighborhood empowerment**
 - **Neighborhood ownership/stewardship**
 - **Neighborhood sustainability**
- **Expanding technology to enhance communication and information sharing**
- **Evaluation of environmental court effectiveness**
- **Interweaving Community Policing and Transforming Wichita**

10 Principles of Community Policing

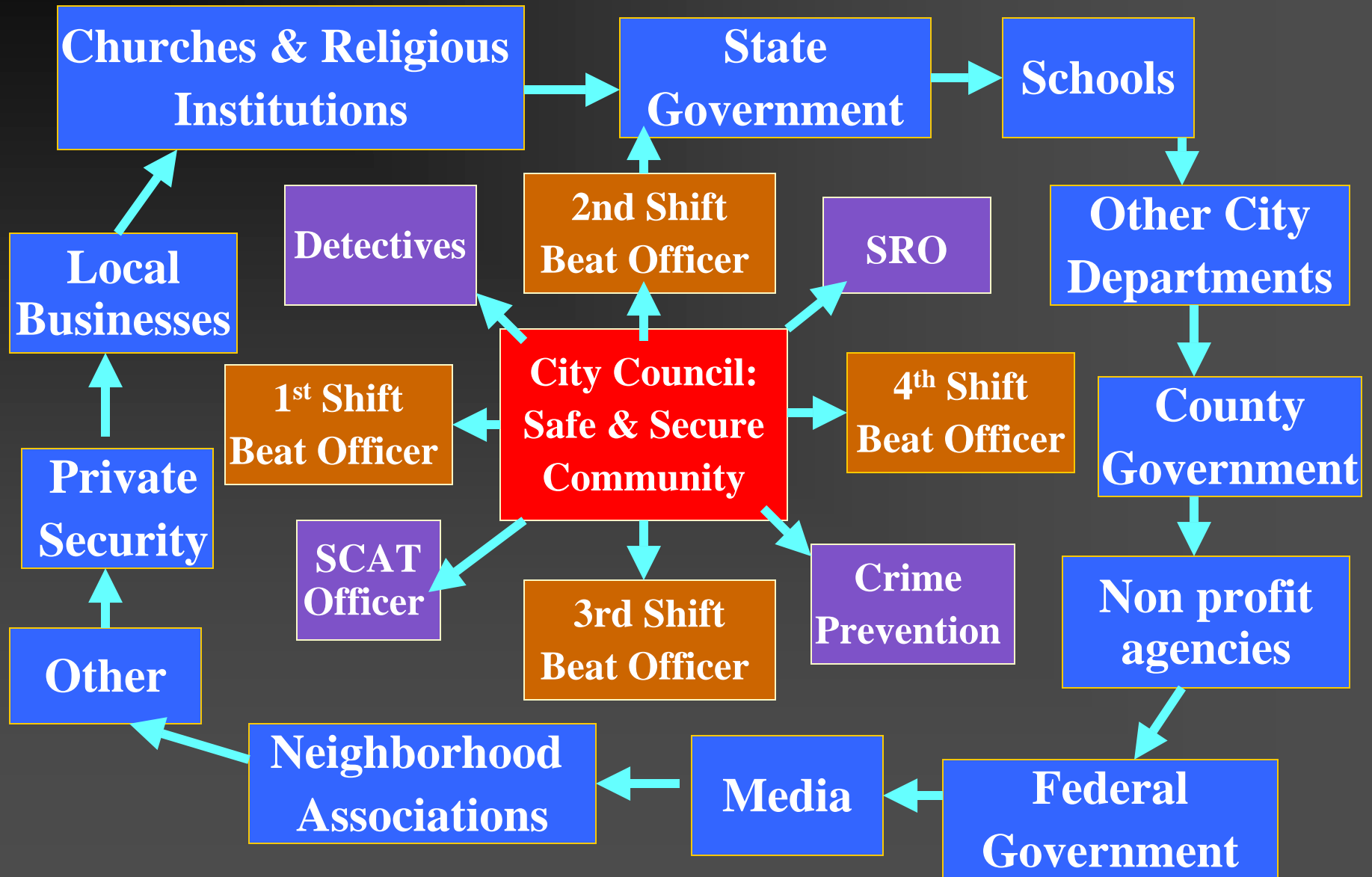
1. It is a Community Based Philosophy
2. It focuses on Creative Problem-Solving
3. It promotes the Development of Trust
4. It Establishes a Broader Role for the Officer
5. It Stresses Community Involvement
6. It is Proactive and not Reactive
7. It Provides Help where it is Needed Most
8. It Enhances Traditional Policing
9. It Involves Everyone
10. It Personalizes Police Service

A Community Police Officers Day

In addition to traditional Law Enforcement activities, such as patrol and responding to calls for service, the day might include:

- Operate Neighborhood substations
- Meet with community groups
- Analyze and solving neighborhood crime
- Work with citizens on crime prevention programs
- Conduct door to door surveys
- Talk with students in schools
- Meet with local merchants
- Make security checks of businesses
- Deal with disorderly people
- Foot patrol of beat
- Bike patrol of beat

Partnering for a Safe Community





Questions?

Vision

Making Wichita the safest city in
America